



Constant care, everywhere.





SOFIHUB home has advanced, adaptive technology which gives people of all ages and abilities the freedom and confidence to live independently, while dramatically reducing their reliance on family or professional carers.

A personalised and proactive companion for the home, SOFIHUB home has spoken reminders to encourage positive living and reduce carers' concerns.

Through intelligent monitoring of movement using sensors placed around the home, it also detects behavioural change and automatically initiates alerts to the appropriate contacts. All of this is achieved without video or audio surveillance; SOFIHUB home does not compromise an individual's right to privacy

FEATURES

Assist in visualising change and irregularities in daily activities

Intelligent messaging system for reminders

Portal - Online access to data (via all mobile devices)

Text to voice messaging

4G SIM card included*

BENEFITS

Indicator of clinical changes

SOFIHUB can advise when you have a doctors' appointments, medication times, birthdays, anniversaries and other events

Realtime viewing of resident's daily activities which ensures peace of mind

Simplicity for messaging

For Residents

Ever wished you had a personal assistant to remind you about everything that you are supposed to be doing today? Like taking your medication, wishing someone a Happy Birthday or putting out the bins, well perhaps you need a SOFIHUB home. No internet is required for this system.

For Families and Carers

Messages and Reminders

The SOFIHUB home intelligent messaging system can remind your loved ones when they have an appointment or when they miss their medication, saving you from worry and minimising their concerns.

Insights

Know if there is activity in the home and if they have accessed their medication or spent excess time in the bathroom.

✉ NOTIFICATIONS

Late to bed

"Harry is late to bed this evening"

Late to wake up

"Harry has not left the bedroom yet this morning"

Long bathroom duration

Friday 25 May 2019

| | |
|----------|-----------------------------|
| Bathroom | 48 minutes 11:12 - 12:00 |
|----------|-----------------------------|

"Harry, it appears you have spent too long in the bathroom."

SOFIHUB beacon

SOFIHUB beacon is a lightweight, easy to use mobile, personal alert system and can issue a notification SOS to multiple people at the touch of a button via SMS.

Equipped with global positioning and mobile network technology, it can instantly pinpoint a person's location and enable immediate voice contact via a built-in speaker phone.

FEATURES

BENEFITS

SOS button, one touch call ability

Speedy access to emergency contacts

Speaker phone

Family members/carers can call directly to user

Instant location message

Receive SMS message with current GPS location

Nationwide connectivity

Assurance your call for help will be received where there is mobile coverage

Waterproof (IP67)

Usable for multiple activities.

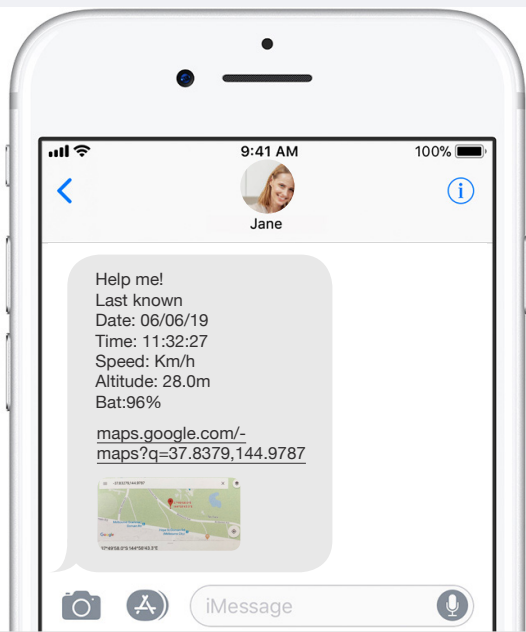
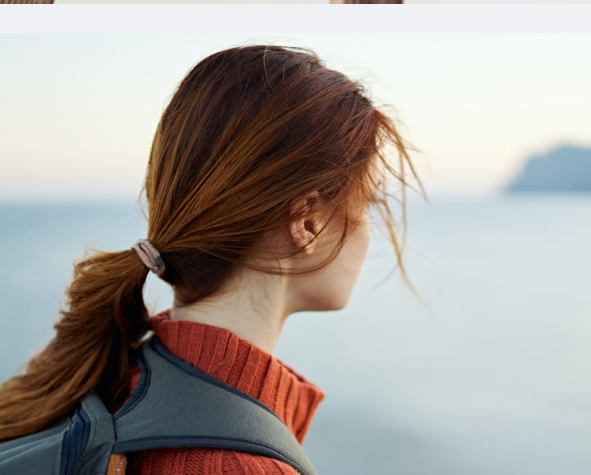
SOFIHUB portal

Intuitive user interface

Rechargeable battery

Audible reminding charging dock

4G SIM card included*



For Your Security

One Touch Calling

When help is needed, simply press the SOS button on your SOFIHUB beacon to call up to three emergency contacts

Instant Location Message

The SOFIHUB beacon also sends an automatic text message to your carer/family member with your current GPS location when the SOS button is used

Emergency Contact

Intelligent Messaging

The SOFIHUB home intelligent messaging system can remind your loved ones when they should wear or charge the beacon

Call User

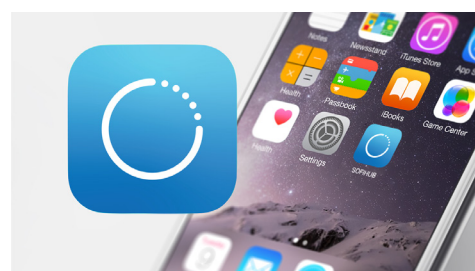
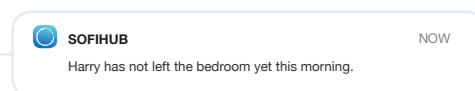
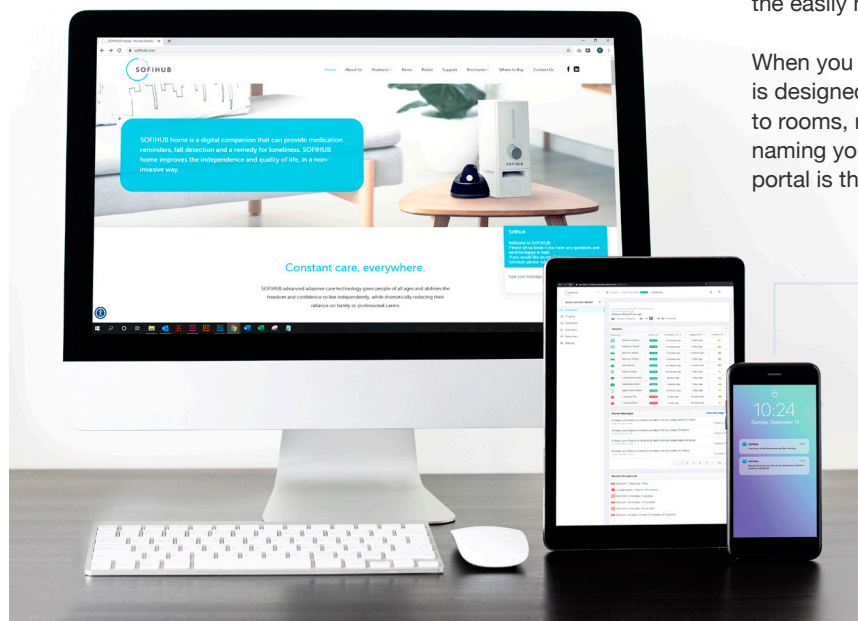
Family members/carers can directly call the beacon to communicate with the user



SOFIHUB portal is the web based, state of the art interface that provides access for users of the SOFIHUB products and services to manage their systems.

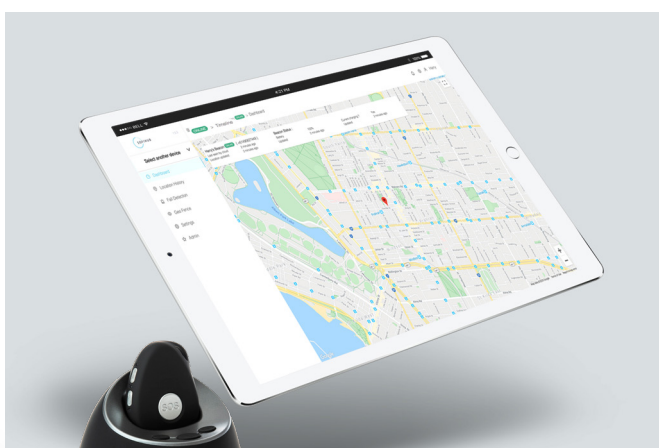
Whether it's checking on activity or behaviours, entering reminders for SOFIHUB home or reviewing location history for SOFIHUB beacon, all are available through the easily navigable portal, found at: portal.sofihub.com

When you receive your device from SOFIHUB, the portal is designed to help you set it up. Assigning sensors to rooms, nominating carers or emergency contacts, naming your devices and setting up reminders – the portal is there for all of this.



For SOFIHUB home

The portal is designed to help with setting up and managing the system. All the information that you need to know about the resident is displayed within, providing you with snapshots of current activities, patterns of past behaviours and the ability to adjust the features of the system, including adding or removing contacts, reminders and altering the volume.



For SOFIHUB beacon

The portal is your first stop to set up your device and then has the ability to adjust settings for future use, all the while being able to review behaviours and movements. Constantly updating, the portal will show your movements in realtime. If you do have to contact someone in an emergency, they will be able to see your last GPS identified position in order to provide the best assistance.

*4G SIM Card & Portal Access

SOFIHUB portal is the web based, state of the art interface that provides nominated carers the ability to manage systems live without the need for Wi-Fi or an Internet in the residents home.

Our solution works via a built-in 4G SIM Card in SOFIHUB home and SOFIHUB beacon resulting in a constant data connection to the portal.

To allow SOFIHUB provide this very best care at all times to your loved ones there is a nominal monthly charge which covers both the portal access and SIM Card.

PRODUCT PACKAGES

SOFIHUB beacon

Includes:

4G Connectivity via 4G SIM card
Convenient drop-in charging station
Rechargeable battery
USB charger cable with AC wall adapter
Waterproof IP67 rating
Audible reminding charging dock



Product Code: 105-E-17Cii

8

SENSORS

SOFIHUB home Care

Includes:

1 SOFIHUB home + 8 Motion Sensors
4G Connectivity + WiFi via 4G SIM card
SOFIHUB portal Access
Alerts/Notifications

Intelligent Messaging:

Greetings
Medication reminders
Hydration reminders
Doctor's appointment
Bathroom alert
Bedroom alert



Product Code: 101-C-17Cii

8

SENSORS

SOFIHUB home Care +

Includes:

1 SOFIHUB home + 8 Motion Sensors + SOFIHUB beacon
4G Connectivity + WiFi via 4G SIM card
SOFIHUB portal Access
Alerts/Notifications

Intelligent Messaging:

Greetings
Medication
Hydration
Doctor's appointment
Bathroom alert
Bedroom alert
Reminder to wear beacon
Reminder to charge beacon



Product Code: 102-A-17Cii



SOFIHUB

Constant care, everywhere.

Sofihub

155 Greville Street
Prahran, VIC 3181

Phone: 1300 110 366
Email: info@sofihub.com

SOFIHUB Product Range v2